

# CERTIFICATE OF ANALYSIS

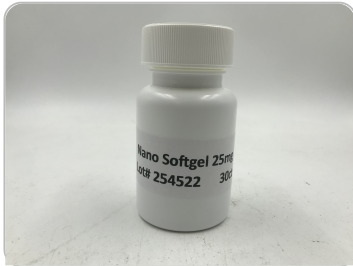
## ISO/IEC 17025:2017 ACCREDITATION #103104



Order #: 93952  
 Order Name: Nano Softgel  
 25mg  
 Batch#: 254522  
 Received: 04/22/2022  
 Completed: 04/26/2022



### Sample



**0.149%**  
Total D9-THC

**6.206%**  
Total CBD

**35.1 mg**  
Cannabinoids per unit

**30.7 mg**  
CBD per unit

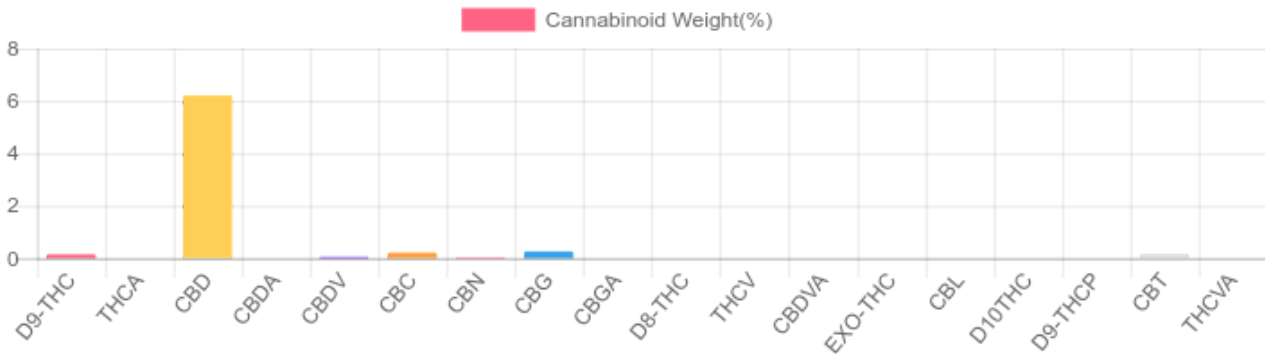
1 unit = 0.49503 grams per unit x  
 Cannabinoid concentration

### Cannabinoids Test

HPLC-DAD  
 GSL SOP 400

UPLOADED: 04/25/2022 14:06:07

Cannabinoids	LOQ(mg/g)	LOD(mg/g)	weight(%)	mg/g	mg/unit
D9-THC	0.1954	0.0645	<b>0.149%</b>	<b>1.495</b>	<b>0.740</b>
THCA	0.1954	0.0645	N/D	N/D	N/D
CBD	0.1954	0.0645	<b>6.206%</b>	<b>62.057</b>	<b>30.720</b>
CBDA	0.1954	0.0645	N/D	N/D	N/D
CBDV	0.1954	0.0645	<b>0.059%</b>	<b>0.585</b>	<b>0.290</b>
CBC	0.1954	0.0645	<b>0.213%</b>	<b>2.130</b>	<b>1.054</b>
CBN	0.1954	0.0645	<b>0.033%</b>	<b>0.329</b>	<b>0.163</b>
CBG	0.1954	0.0645	<b>0.260%</b>	<b>2.600</b>	<b>1.287</b>
CBGA	0.1954	0.0645	N/D	N/D	N/D
D8-THC	0.1954	0.0645	N/D	N/D	N/D
THCV	0.1954	0.0645	N/D	N/D	N/D
CBDVA	0.1954	0.0645	N/D	N/D	N/D
EXO-THC	0.1954	0.0645	N/D	N/D	N/D
CBL	0.1954	0.0645	N/D	N/D	N/D
D10THC	0.1954	0.0645	N/D	N/D	N/D
D9-THCP	0.1954	0.0645	N/D	N/D	N/D
CBT	0.1954	0.0645	<b>0.167%</b>	<b>1.670</b>	<b>0.827</b>
THCVA	0.1954	0.0645	N/D	N/D	N/D
TOTAL D9-THC			<b>0.149%</b>	<b>1.495</b>	<b>0.7</b>
TOTAL CBD*			<b>6.206%</b>	<b>62.057</b>	<b>30.7</b>
TOTAL CANNABINOIDS			<b>7.087%</b>	<b>70.866</b>	<b>35.1</b>



\*Total CBD = CBD + CBDA x 0.877  
 N/D - Not Detected, B/LOQ - Below Limit of Quantification

Diana Asensio, M.S.,  
 Lab Director

**Green Scientific Labs**  
 info@greenscientificlabs.com  
 1-833 TEST-CBD



# CERTIFICATE OF ANALYSIS

## ISO/IEC 17025:2017 ACCREDITATION #103104



Order #: 93952  
 Order Name: Nano Softgel  
 25mg  
 Batch#: 254522  
 Received: 04/22/2022  
 Completed: 04/26/2022



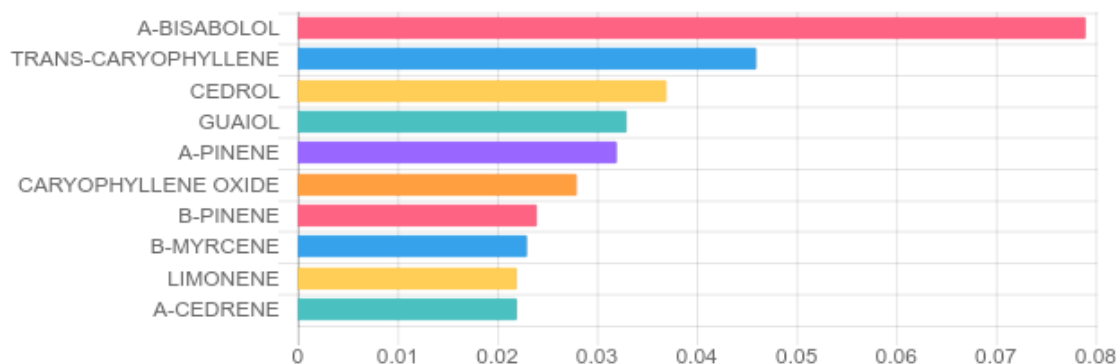
### TERPENES: TOTAL (0.375%)

GSL SOP 404  
 Uploaded: 04/25/2022 15:52:09

GC-FID

Terpene	Results (%)	LOQ (%)	LOD (%)	Terpene	Results (%)	LOQ (%)	LOD (%)
3-CARENE	0.005%	0.003%	0.001%	GERANIOL	N/D	0.003%	0.001%
A-BISABOLOL	0.079%	0.003%	0.001%	GERANYL ACETATE	N/D	0.003%	0.001%
A-CEDRENE	0.022%	0.003%	0.001%	GUAJOL	0.033%	0.003%	0.001%
A-HUMULENE	0.012%	0.003%	0.001%	HEXAHYDROTHYMOL	N/D	0.003%	0.001%
A-PINENE	0.032%	0.003%	0.001%	ISOBORNEOL	N/D	0.003%	0.001%
A-TERPINENE	0.003%	0.003%	0.001%	ISOPULEGOL	N/D	0.003%	0.001%
B-MYRCENE	0.023%	0.003%	0.001%	LIMONENE	0.022%	0.003%	0.001%
B-PINENE	0.024%	0.003%	0.001%	LINALOOL	N/D	0.003%	0.001%
BORNEOL (MIX OF ISOMERS)	N/D	0.003%	0.001%	NEROL	N/D	0.003%	0.001%
CAMPHENE	N/D	0.003%	0.001%	P-MENTHA-1, 5-DIENE	B/LOQ	0.003%	0.001%
CAMPHOR (MIX OF ISOMERS)	N/D	0.003%	0.001%	PULEGONE (+)	N/D	0.003%	0.001%
CARYOPHYLLENE OXIDE	0.028%	0.003%	0.001%	SABINENE HYDRATE	N/D	0.003%	0.001%
CEDROL	0.037%	0.003%	0.001%	TERPINEOL (MIX OF ISOMERS)	N/D	0.003%	0.001%
CIS-NEROLIDOL	N/D	0.003%	0.001%	TERPINOLENE	N/D	0.003%	0.001%
CIS-OCIMENE	N/D	0.003%	0.001%	TRANS-CARYOPHYLLENE	0.046%	0.003%	0.001%
ENDO-FENCHYL ALCOHOL	N/D	0.003%	0.001%	TRANS-NEROLIDOL	0.004%	0.003%	0.001%
EUCALYPTOL	N/D	0.003%	0.001%	TRANS-OCIMENE	B/LOQ	0.003%	0.001%
FENCHONE (MIX OF ISOMERS)	N/D	0.003%	0.001%	VALENCENE	N/D	0.003%	0.001%
GAMMA-TERPINENE	0.005%	0.003%	0.001%				

### Top Terpenes Results:



Diana Asensio, M.S.,  
 Lab Director

**Green Scientific Labs**  
 info@greenscientificlabs.com  
 1-833 TEST CBD



This COA is governed by the terms and conditions listed on: <https://www.greenscientificlabs.com/terms-of-use.php>

# CERTIFICATE OF ANALYSIS

## ISO/IEC 17025:2017 ACCREDITATION #103104



Order #: 93952  
 Order Name: Nano Softgel  
 25mg  
 Batch#: 254522  
 Received: 04/22/2022  
 Completed: 04/26/2022



### PESTICIDE ANALYSIS:

GSL SOP 401

UPLOADED: 04/25/2022 18:17:51

GC-MS/MS

Pesticide	Action Level (ppm)	Results (ppm)	LOQ (ppm)	LOD (ppm)
CAPTAN	3.000	N/D	0.100	0.010
CHLORDANE	0.100	N/D	0.100	0.010
CHLORFENAPYR	0.100	N/D	0.100	0.010
COUMAPHOS	0.100	N/D	0.100	0.010

Pesticide	Action Level (ppm)	Results (ppm)	LOQ (ppm)	LOD (ppm)
CYFLUTHRIN	1.000	N/D	0.100	0.010
CYPERMETHRIN	1.000	N/D	0.100	0.010
PENTACHLORONITROBENZENE	0.200	N/D	0.100	0.010

LC-MS/MS

Pesticide	Action Level (ppm)	Results (ppm)	LOQ (ppm)	LOD (ppm)
ABAMECTIN B1A	0.300	N/D	0.005	0.005
ACEPHATE	3.000	N/D	0.005	0.001
ACEQUINOCYL	2.000	N/D	0.005	0.005
ACETAMIPRID	3.000	N/D	0.005	0.005
ALDICARB	0.100	N/D	0.005	0.005
AZOXYSTROBIN	3.000	N/D	0.005	0.001
BIFENAZATE	3.000	N/D	0.005	0.001
BIFENTHRIN	0.500	N/D	0.005	0.005
BOSCALID	3.000	N/D	0.005	0.005
CARBARYL	0.500	N/D	0.005	0.001
CARBOFURAN	0.100	N/D	0.005	0.001
CHLORANTRANILIPROLE	3.000	N/D	0.005	0.005
CHLORMEQUAT CHLORIDE	3.000	N/D	0.250	0.100
CHLORPYRIFOS	0.100	0.006	0.005	0.005
CLOFENTEZINE	0.500	N/D	0.005	0.005
DAMINOZIDE	0.100	N/D	0.005	0.001
DIAZINON	0.200	N/D	0.005	0.005
DICHLORVOS	0.100	N/D	0.005	0.001
DIMETHOATE	0.100	N/D	0.005	0.001
DIMETHOMORPH	3.000	N/D	0.005	0.001
ETHOPROPHOS	0.100	N/D	0.005	0.001
ETOFENPROX	0.100	N/D	0.005	0.005
ETOXAZOLE	1.500	N/D	0.050	0.005
FENHEXAMID	3.000	N/D	0.005	0.001
FENOXYCARB	0.100	N/D	0.005	0.005
FENPYROXIMATE	2.000	N/D	0.005	0.005
FIPRONIL	0.100	N/D	0.005	0.005
FLONICAMID	2.000	N/D	0.025	0.005
FLUDIOXONIL	3.000	N/D	0.005	0.005
HEXYTHIAZOX	2.000	N/D	0.005	0.005

Pesticide	Action Level (ppm)	Results (ppm)	LOQ (ppm)	LOD (ppm)
IMAZALIL	0.100	N/D	0.005	0.001
IMIDACLOPRID	3.000	N/D	0.005	0.001
KRESOXIM-METHYL	1.000	N/D	0.005	0.005
MALATHION	2.000	N/D	0.005	0.001
METALAXYL	3.000	N/D	0.005	0.001
METHIOCARB	0.100	N/D	0.005	0.001
METHOMYL	0.100	N/D	0.005	0.001
MEVINPHOS	0.100	N/D	0.005	0.001
MYCLOBUTANIL	3.000	N/D	0.005	0.005
NALED	0.500	N/D	0.005	0.001
OXAMYL	0.500	N/D	0.005	0.001
PACLOBUTRAZOL	0.100	N/D	0.005	0.005
PERMETHRINS	1.000	N/D	0.005	0.005
PHOSMET	0.200	N/D	0.005	0.001
PIPERONYL BUTOXIDE	3.000	N/D	0.005	0.005
PRALLETHRIN	0.400	N/D	0.005	0.005
PROPICONAZOLE	1.000	N/D	0.010	0.005
PROPOXUR	0.100	N/D	0.005	0.001
PYRETHRINS	1.000	N/D	0.005	0.005
PYRIDABEN	3.000	N/D	0.005	0.005
SPINETORAM	3.000	N/D	0.005	0.005
SPINOSAD	3.000	N/D	0.005	0.005
SPIROMESIFEN	3.000	N/D	0.005	0.001
SPIROTETRAMAT	3.000	N/D	0.005	0.005
SPIROXAMINE	0.100	N/D	0.005	0.001
TEBUCONAZOLE	1.000	N/D	0.005	0.001
THIACLOPRID	0.100	N/D	0.005	0.001
THIAMETHOXAM	1.000	N/D	0.005	0.001
TRIFLOXYSTROBIN	3.000	N/D	0.005	0.005

N/D = Not Detected, A/LOQ = Above LOQ Level, B/LOQ = Below LOQ Level, B/LOD = Below LOD Level

Diana Asensio, M.S.,  
 Lab Director

**Green Scientific Labs**  
 info@greenscientificlabs.com  
 1-833 TEST CBD



This COA is governed by the terms and conditions listed on: <https://www.greenscientificlabs.com/terms-of-use.php>

# CERTIFICATE OF ANALYSIS

## ISO/IEC 17025:2017 ACCREDITATION #103104



Order #: 93952  
Order Name: Nano Softgel  
25mg  
Batch#: 254522  
Received: 04/22/2022  
Completed: 04/26/2022



### RESIDUAL SOLVENTS:

HS-GC-MS

GSL SOP 405

Uploaded: 04/26/2022 10:05:52

Residual Solvent	Action Level (ppm)	Results (ppm)	LOQ (ppm)	LOD (ppm)
1,1-DICHLOROETHENE	8	N/D	0.63	0.6
1,2-DICHLOROETHANE	2	N/D	0.12	0.012
1,2-DICHLOROETHENE	5	N/D	0.73	0.09
ACETONE	5,000	N/D	140	9
ACETONITRILE	410	N/D	25	0.72
BENZENE	1	N/D	1	0.6
BUTANE	5,000	N/D	50	48
CHLOROFORM	1	N/D	1	0.5
ETHANOL	5,000	B/LOQ	140	12
ETHYL ACETATE	5,000	N/D	140	2.4
ETHYL ETHER	5,000	N/D	140	6
ETHYLENE OXIDE	1	N/D	2	0.6
ISOPROPYL ALCOHOL	5,000	B/LOQ	140	3
METHANOL	3,000	B/LOQ	100	6
METHYLENE CHLORIDE	125	N/D	1.5	1.5
N-HEPTANE	5,000	N/D	140	6
N-HEXANE	290	N/D	18	0.06
PENTANE	5,000	N/D	140	9
PROPANE	5,000	N/D	30	30
TOLUENE	890	N/D	53	0.9
TRICHLOROETHENE	1	N/D	1	0.3
XYLENES	150	N/D	130	1.8

Diana Asensio, M.S.,  
Lab Director

Green Scientific Labs  
info@greenscientificlabs.com  
1-833 TEST CBD



This COA is governed by the terms and conditions listed on: <https://www.greenscientificlabs.com/terms-of-use.php>

# CERTIFICATE OF ANALYSIS

## ISO/IEC 17025:2017 ACCREDITATION #103104



Order #: 93952  
Order Name: Nano Softgel  
25mg  
Batch#: 254522  
Received: 04/22/2022  
Completed: 04/26/2022



### Microbial Analysis:

Microbial Analysis GSL SOP 406

Uploaded: 04/24/2022 16:08:55

### MICROBIAL ANALYSIS:

Test	SOP	Test Method	Device Used	Allowable Criteria	Actual Result
TOTAL YEAST AND MOLD	406.01	QPCR	ARIAMX PCR	NOT APPLICABLE	< 1,000 CFU/G
LISTERIA MONOCYTOGENES	406.01	QPCR	ARIAMX PCR	NOT APPLICABLE	NOT DETECTED
PATHOGENIC E. COLI	406.01	QPCR	ARIAMX PCR	NOT APPLICABLE	NOT DETECTED
STEC E. COLI*	406.01	REAL-TIME PCR	ARIAMX PCR	< 1 CFU/G	NOT DETECTED
SALMONELLA*	406.01	REAL-TIME PCR	ARIAMX PCR	< 1 CFU/G	NOT DETECTED

† USP 61 (enumeration of bacteria TAC, TYM, and ENT/Coliform), USP 62 (identifying specific species E.coli Aspergillus etc)

\* STEC and Salmonella run as Multiplex

\*\* CFU/g Calculation based on MIP/Extract matrix

Diana Asensio, M.S.,  
Lab Director

Green Scientific Labs  
info@greenscientificlabs.com  
1-833 TEST CBD



This COA is governed by the terms and conditions listed on: <https://www.greenscientificlabs.com/terms-of-use.php>

# CERTIFICATE OF ANALYSIS

## ISO/IEC 17025:2017 ACCREDITATION #103104



Order #: 93952  
Order Name: Nano Softgel  
25mg  
Batch#: 254522  
Received: 04/22/2022  
Completed: 04/26/2022



### Mycotoxin Analysis:

LC-MS/MS  
GSL SOP 401

Uploaded: 04/25/2022 18:17:40

Analyte	LOQ (ppb)	LOD (ppb)	Action Lvl (ppb)	Results (ppb)
AFLATOXIN B1	1	1	20	N/D
AFLATOXIN B2	1	1	20	N/D
AFLATOXIN G1	1	1	20	N/D
AFLATOXIN G2	1	1	20	N/D
OCHRATOXIN A	1	1	20	N/D

### Heavy Metals Analysis:

ICP-MS  
GSL SOP 403

Uploaded: 04/25/2022 15:59:05

Metal	LOQ (ppb)	LOD (ppb)	Action Level (ppb)	Result (ppb)
ARSENIC (AS)	75	20	200	N/D
CADMIUM (CD)	75	20	200	N/D
MERCURY (HG)	75	20	100	N/D
LEAD (PB)	75	20	500	N/D

### Moisture Analysis:

Shimadzu MOC63U Moisture Balance - GSL SOP 411

Uploaded: 04/22/2022 22:27:39

#### Moisture %

4.92%

### Water Activity:

Water Activity Meter

Uploaded: 04/22/2022 22:27:40

#### Water

0.58

### Filth and Foreign Materials Analysis:

Microscope - Amscope Simul-Focal Trinocular Stereo Zoom Microscope - GSL SOP 409

Uploaded: 04/22/2022 21:35:16

Pass: No Foreign Materials Detected

Diana Asensio, M.S.,  
Lab Director

Green Scientific Labs  
info@greenscientificlabs.com  
1-833 TEST CBD

